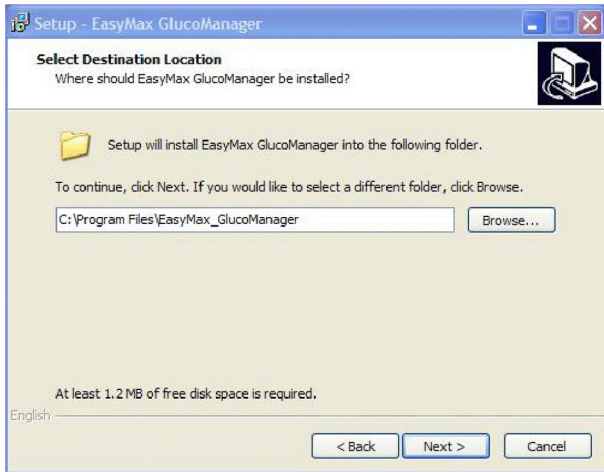


Start the Installer:

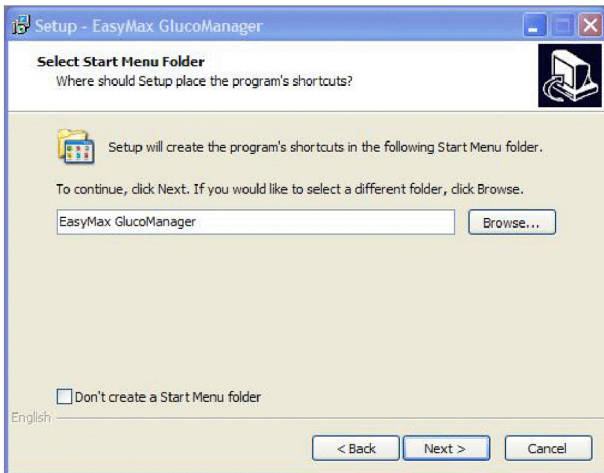
To ensure proper installation, do not connect cord or meter until software and driver installation has been completed.

1. Insert the CD-ROM into the drive. (Most computers start installation automatically.)
2. Or double-click the GDMS II installer file.
(GlucoManagerTM_Setup.exe)
3. The Welcome Page will appear. Click Next to continue or Cancel to quit.



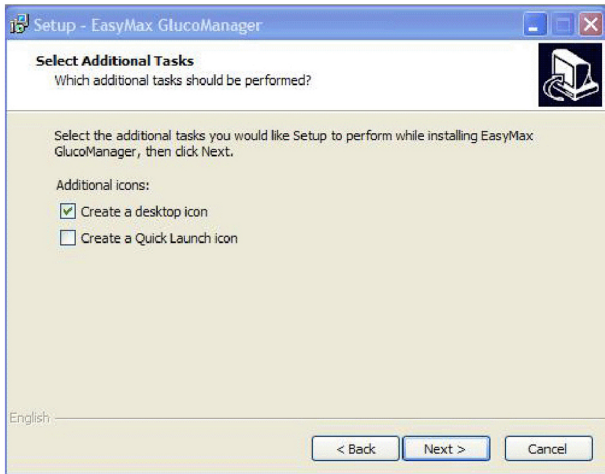
Select The Folder Destination Location

Verify the installation folder. We recommend that you keep the preselected folder. (If required,click Browse to select another folder.) Click Next.



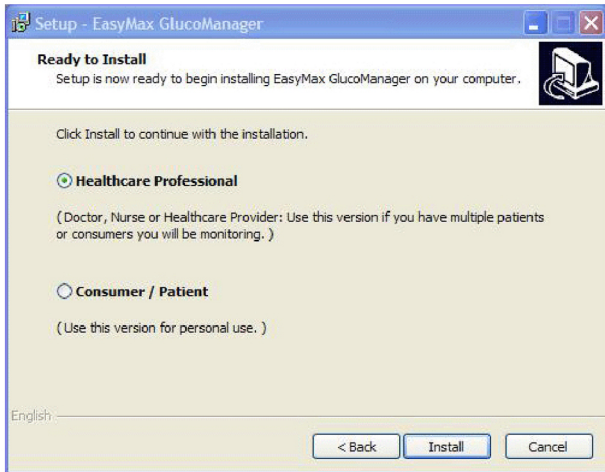
Select Start Menu Folder

Verify the installation folder. We recommend that you keep the preselected folder. (If required, click Browse to select another folder.) Click Next.



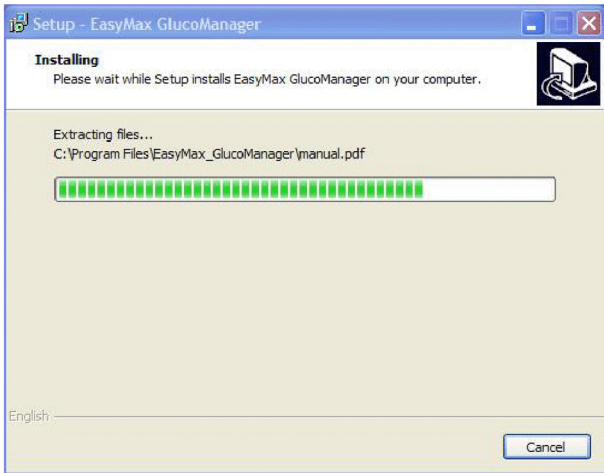
Select Additional Tasks

Create a desktop icon or a Quick Launch icon by clicking on the corresponding box(s). Click Next.

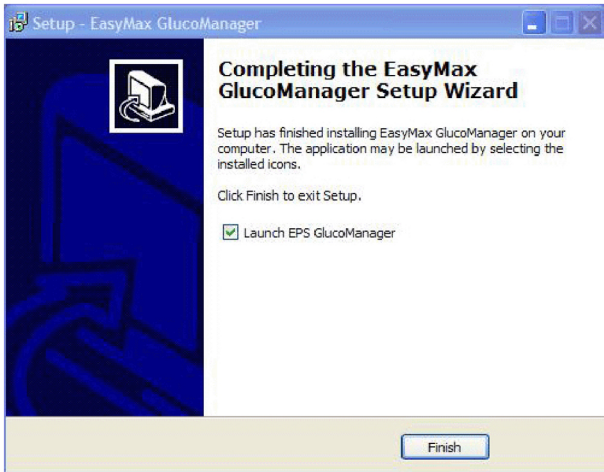


Ready to Install (Choose Installation Type)

Select the installation version – Healthcare Professional or End-User. Click Install to proceed. Alternatively, click Back to make changes in previous screens. Or click Cancel to stop the installation.




The Installing screen will show the progress of the installation. You may click cancel at anytime to cancel the installation.



Complete the Installation

Installation is complete. Click Finish to exit setup.

The GlucoManager program will start and the GDMS  icon is placed on your desktop and in your Start Menu.

You may now plugin the USB cord into your computer (the cord driver will install). Once the driver installs, turn on the meter first and then connect it to the cord. The meter will beep twice.